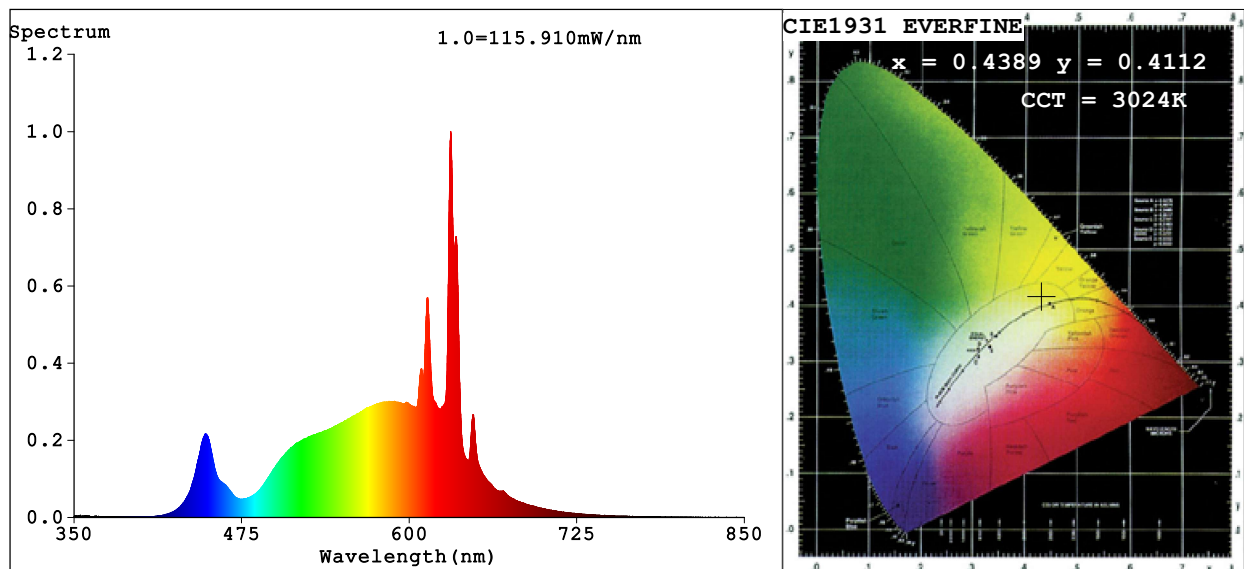


Spectrum Test Report



Color Parameters:

Chromaticity Coordinate: $x=0.4389$ $y=0.4112$ $u'=0.2488$ $v'=0.5244$
 CCT=3024K (Duv=0.0025) Dominant WL:Ld =581.9nm Purity=55.2%
 Ratio:R=24.0% G=73.7% B=2.2%; Peak WL:Lp=630.9nm FWHM=8.0nm
 Render Index:Ra=90.4 CRI=86.4 TM30:Rf=89 Rg=101
 R1 =91 R2 =92 R3 =92 R4 =92 R5 =90 R6 =91 R7 =93
 R8 =82 R9 =54 R10=80 R11=93 R12=74 R13=91 R14=94 R15=87

Photo Parameters:

Flux = 2156 lm Eff. : 121.02 lm/W Fe = 6.215 W

Electrical parameters:

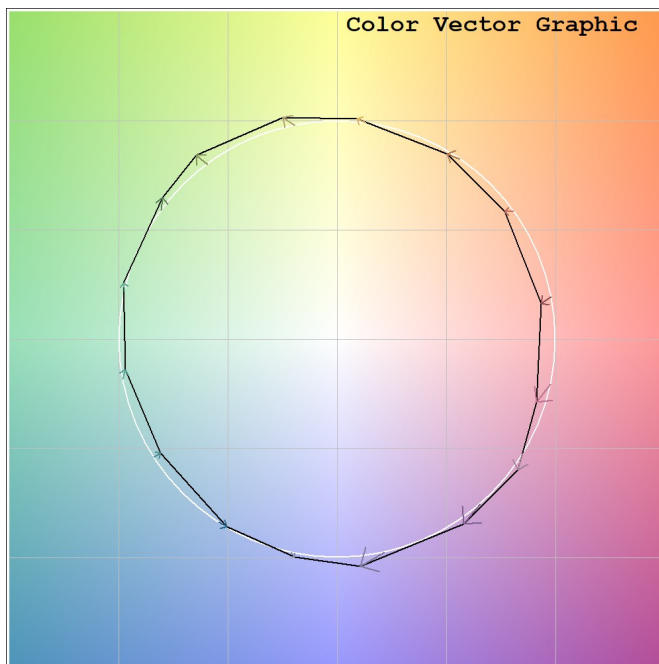
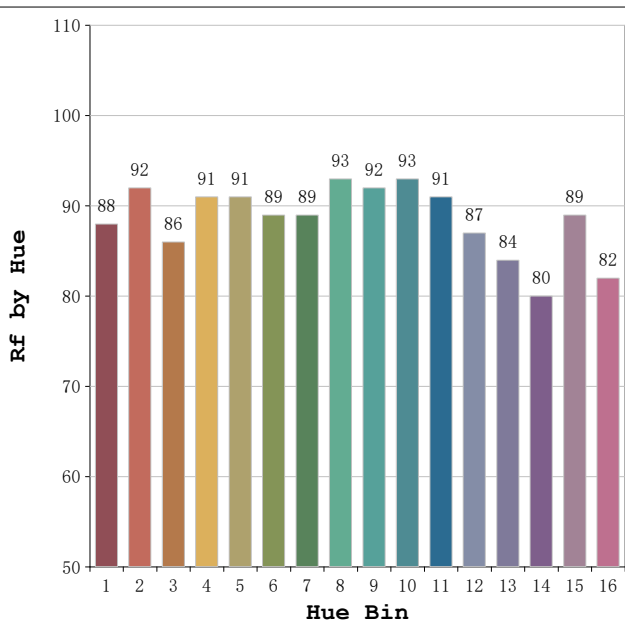
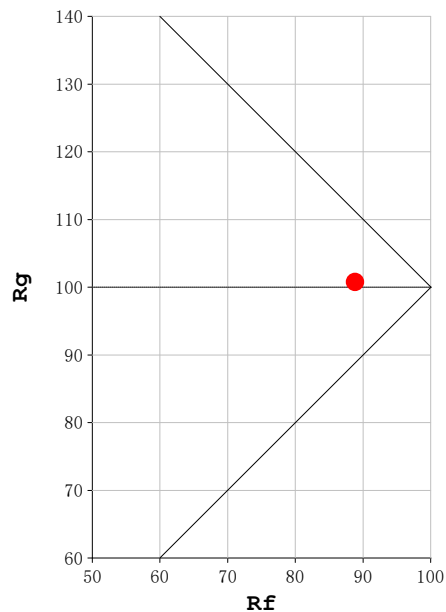
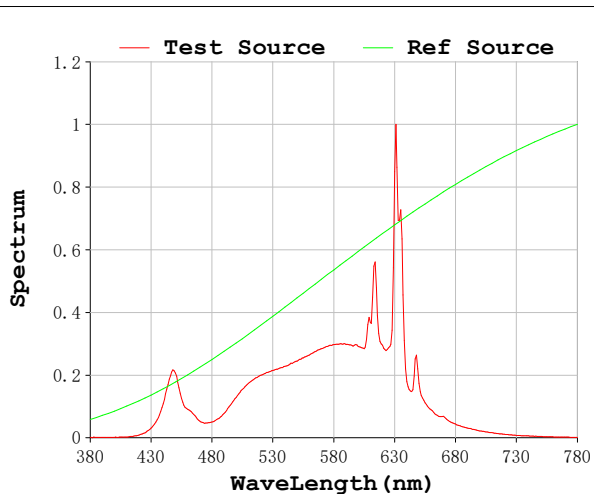
V = 230.13 V I = 0.08640 A P = 17.81 W PF = 0.8959

Status: Integral T = 188 ms Ip = 35538 (54%)

Model:Spotia 18w Negro
 Tester:Sergio Carneros
 Temperature:20Deg
 Manufacturer:Luz Negra

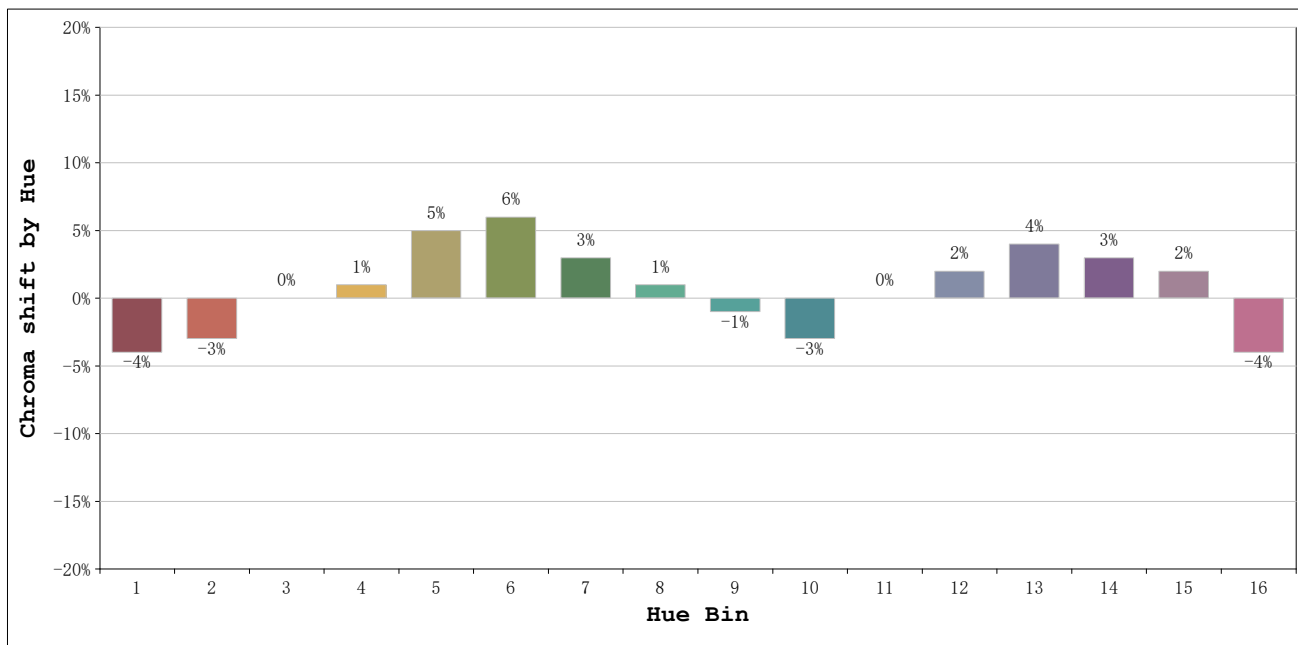
Number:3000k 18°
 Date:2026-03-23 15:58:19
 Humidity:50%
 Remarks:1 unidad

Rf: 89 **CCT: 3024 K** **u': 0.2488**
Rg: 101 **Duv: 0.0025** **v': 0.5244**



Model:Spotia 18w Negro
 Tester:Sergio Carneros
 Temperature:20Deg
 Manufacturer:Luz Negra

Number:3000k 18°
 Date:2026-03-23 15:58:19
 Humidity:50%
 Remarks:1 unidad



			Graphic shift(%)	
Hue Bin	Hue Angle	Rf	Chroma	Hue
1	0.0° - 22.5°	88	-4	-1
2	22.5° - 45.0°	92	-3	2
3	45.0° - 67.5°	86	0	6
4	67.5° - 90.0°	91	1	4
5	90.0° - 112.5°	91	5	5
6	112.5° - 135.0°	89	6	2
7	135.0° - 157.5°	89	3	-4
8	157.5° - 180.0°	93	1	-3
9	180.0° - 202.5°	92	-1	-3
10	202.5° - 225.0°	93	-3	0
11	225.0° - 247.5°	91	0	4
12	247.5° - 270.0°	87	2	2
13	270.0° - 292.5°	84	4	-11
14	292.5° - 315.0°	80	3	-10
15	315.0° - 337.5°	89	2	-6
16	337.5° - 360.0°	82	-4	-8

Model:Spotia 18w Negro
 Tester:Sergio Carneros
 Temperature:20Deg
 Manufacturer:Luz Negra

Number:3000k 18°
 Date:2026-03-23 15:58:19
 Humidity:50%
 Remarks:1 unidad